



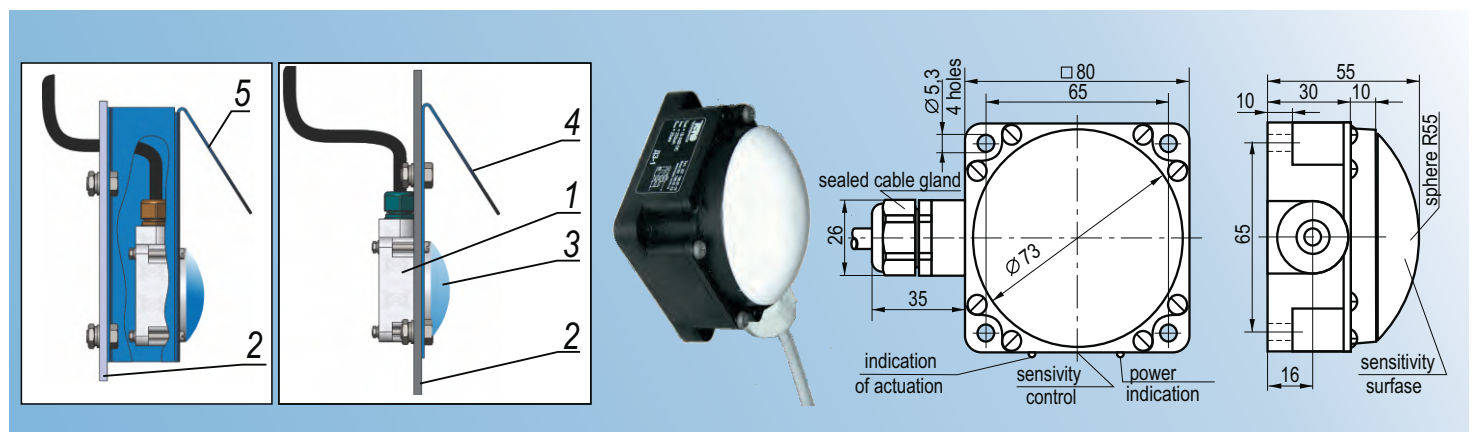
The sensors of loading chutes clogging (gumming) checking, capacitive –Д3Е-І71-...

Д3Е-І71-... series sensors are ideal for checking the loose materials level, including small and medium fractions. Sticking of material and accumulation of static electricity are excluded due to the spherical surface made of fluoroplastic.

Д3Е-І71-... series sensors are installed into the side or the cover of a loading chute (of a bunker) (2) at a height of a controlled level with the sensitive surface (3) directed toward the emergence of a checking object.

It is recommended to protect the sensor using a visor of mortise bracket №1(4) or of attached bracket № 2(5) to avoid the damages caused by falling material.

The emergence of checking material in the actuation area (25 mm) causes a change of the logic signal of the sensor.



Denomination - Д3Е-І71-... series sensors

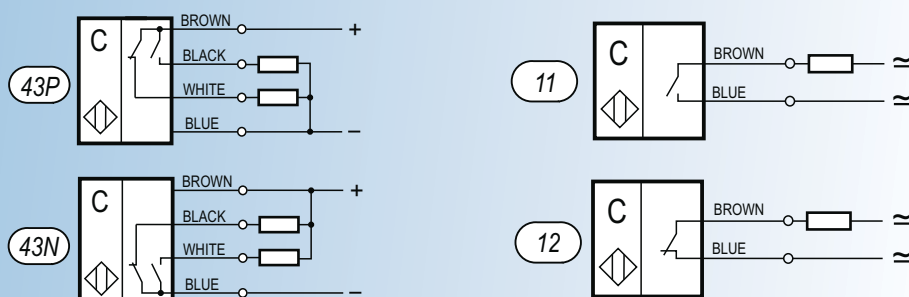
4-wire DC voltage sensors

2-wire AC/DC voltage sensors

SPECIFICATIONS:

	4-wire DC voltage sensors		2-wire AC/DC voltage sensors	
	...43P	...43N	...11	...12
The switching distance, mm	25			
Supply voltage, V	10...30 DC		20 ... 320 AC / 20 ... 250 DC	
Max. switching current, I _{max} mA	250		500	
Residual current, I mA	-		≤5	
Surge current when t=20 m/sec	-		3 A, f=1 Hz	
Surge current when t=20 m/sec	≤2,5		≤7,5	
Operating temperature range, °C	high- temperature t=-15°...+105°C, in the sensor denomination specified as- BT typical execution t=-25°...+75°C, in the sensor denomination not specified low-temperature t=-45°...+65°C, in the sensor denomination specified as - HT			
Protection degree	IP67			
Cable connection, L=2 m	4x0,25 mm ²		3x0,34 mm ²	
When ordering other lengths, specify the number of meters in the end of the denomination (see example of notation)				
Dimensions, mm	80x80x55			
Sensor weight, kg	0,28			

Wiring diagrams:





Д3Е-І71-... series sensors are available in several versions that differ from each other in connection diagrams, supply voltage, operating temperature ranges and cable length.

Example of sensor notation in the documentation and orders:

Д3Е - І71 - 43Р - HT - 3

Right-angled, with overall dimensions 80x80x55 mm

The number and type sensor contacts:

11, 12 – 2- wire sensors with normally open (NO) and normally closed (NC) contacts, respectively;

43P, 43N – 4- wire sensors with switching contact (NO/NC) with the PNP or NPN type of transistor switch, , respectively;

Temperature range of usage

HT – -45°...+65°C;

BT – -15°...+105°C

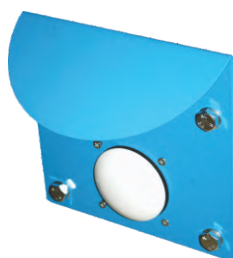
Without marking- -25°...+75°C

Cable length

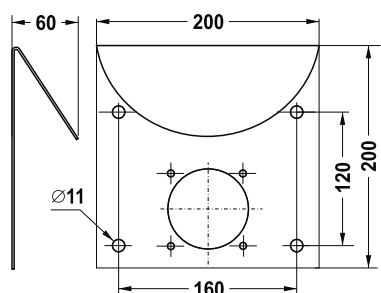
3- cable length in meters, without marking cable length – 2m

Optional equipment for Д3Е-І71-...series sensors

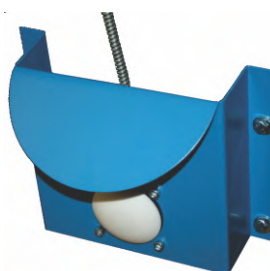
Bracket № 1



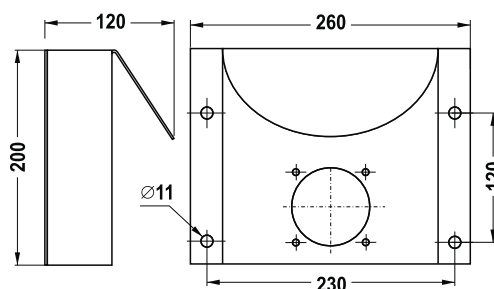
Weight, kg - 0,8



Bracket № 2



Weight, kg - 1,4



Brackets № 1 and № 2 are designed for installation of the Д3Е-І71-...series sensors.

The visor of brackets provides sensors protection from the damages caused by materials falling from above .

Bracket № 1 is used with the «mortise» way of sensor installation, bracket № 2 is used with the «attached» one.

Brackets are shown with the installed sensors on the images.

*If it is necessary to provide a delay of a switching of the Д3Е-І71-... series sensors it is recommended to apply the **Module Д3-2-24**, see the part of the catalogue 1.7 «The sensor of loading chutes clogging checking, ultrasonic - Optional equipment».

«Pilot Production «Technologies of Control» Co. Ltd

630117, Novosibirsk, Arbusova street, 2a
Phone: (383) 332-49-32, 299-32-02, 335-64-09
sale@op-teko.ru www.op-teko.ru